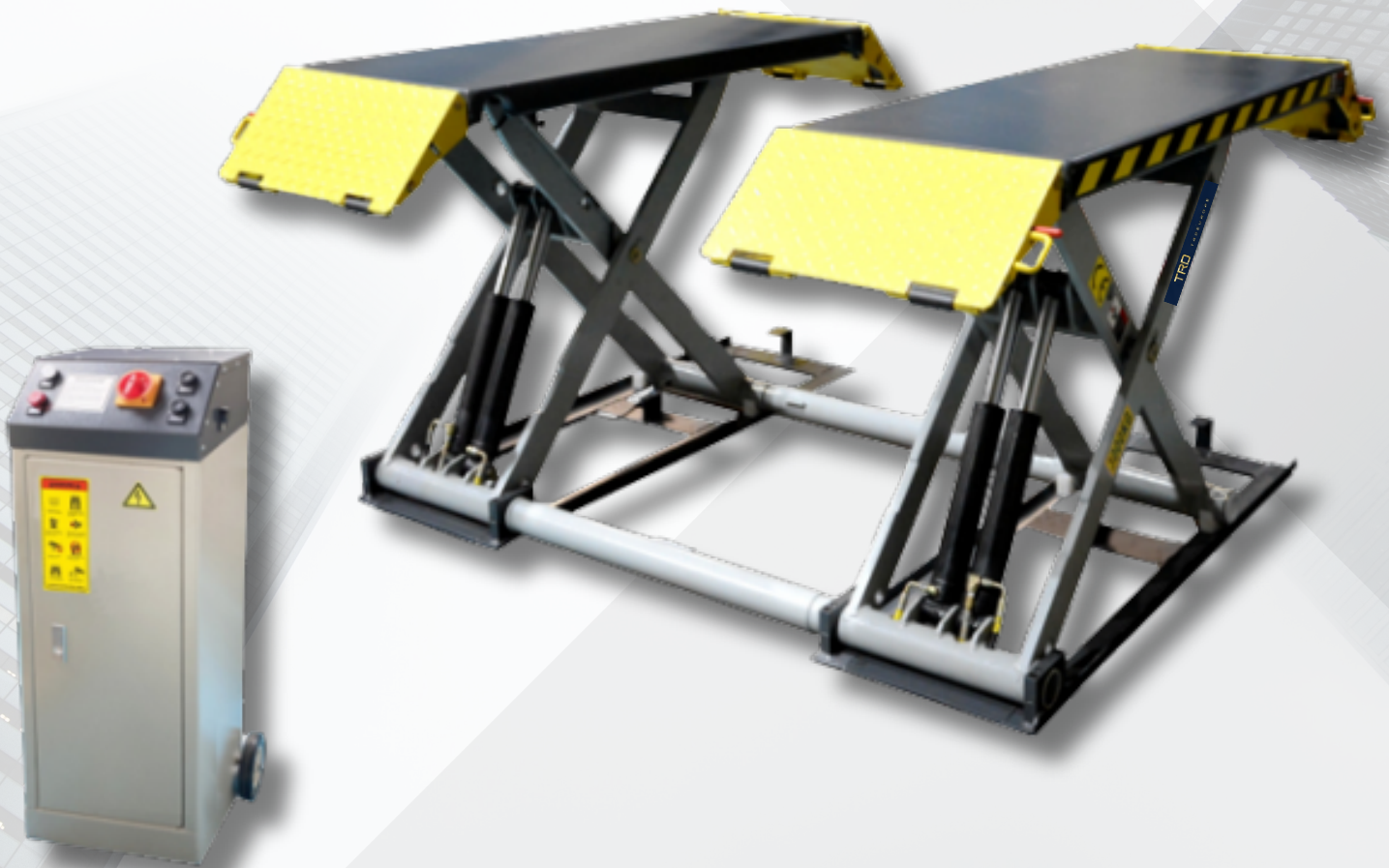


TRD

MID-RISE SCISSOR **PORTABLE LIFT**

TRD MID-RISED SCISSORS LIFT MODEL T0003-LRM IS DESIGNED WITH HYDRAULIC LOCK SYSTEM AND TORSION BAR CONNECTING FOR SYNCHRONIZATION.



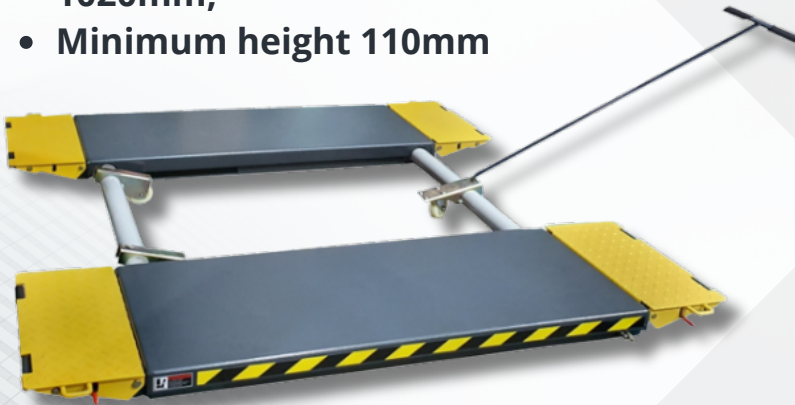
T0003-LRM

SCISSOR LIFT

FEATURES

PRODUCTS

- Lifting capacity: 3000kg;
- Portable design, include portable kits;
- Hydraulic lock system & Torsion bar connecting for synchronization; Designed and manufactured on C.E. standard: 2010 version EN1493; Adjustable approach ramps can quickly extend the length of platform to
- 2045mm;
- Mid-rise scissor lift, maximum lifting height 1020mm;
- Minimum height 110mm



Portable design, mobile easily.



Both 38mm and 75mm height rubber pads included as standard supply.



Movable drive-in ramps, and extendable platform.



Standard with portable kits include mobile bracket wheel and pulling bar

SPECIFICATIONS

PRODUCTS

MODEL	T0003-LRM	
Lifting capacity	3000kg	
lifting time	23S	
Lifting height	A1	1020mm
Minimum height	A2	110mm
Overall Length	B	2045mm
Runway Length	C	1460mm
Overall Width	D	1952mm
Runway Width	E	536mm
Width Between Runways	F	800mm
Motor	3.0HP	
Gross Weight	562kg	

